



---

# FieldUpdater

User Manual

Revision 1.2

LSI Corp. Confidential and Proprietary

**Preliminary – Subject to Change**

---

March 2012

Proprietary and Confidential to LSI Corporation

## Revision History

| Document |            | Description of Changes Since Last Revision                                     |
|----------|------------|--|
| Version  | Date       |  |
| 1.0      | 04/27/2011 | <ul style="list-style-type: none"><li>• Preliminary Document Release</li></ul> |
| 1.1      | 08/30/2011 | <ul style="list-style-type: none"><li>• Added Windows 7 Support</li></ul>      |
| 1.2      | 3/26/2012  | <ul style="list-style-type: none"><li>•</li></ul>                              |

## Related Documents

- **Genesis Utilities User Manual**

## Legal Information

Copyright© 2011-2012 LSI Corporation. All rights reserved. The information in this document is proprietary and confidential to LSI Corporation. No part of this document may be reproduced in any form or by any means or used to make any derivative work (such as translation, transformation, or adaptation) without written permission from LSI Corporation. LSI reserves the right to revise this documentation and to make changes in content without obligation on the part of LSI to provide notification of such revision or change.

LSI provides this documentation without warranty, term or condition of any kind, either expressed or implied, including, but not limited to, express and implied warranties of merchantability, fitness for a particular purpose, and non-infringement. While the information contained herein is believed to be accurate, such information is preliminary, and should not be relied upon for accuracy or completeness, and no representations or warranties of accuracy or completeness are made. In no event will LSI be liable for damages arising directly or indirectly from any use of or reliance upon the information contained in this document. LSI may make improvements or changes in the product(s) and/or the program(s) described in this documentation at any time. LSI and the LSI logo are registered trademarks, and DuraWrite, DuraClass, RAISE, SandForce Driven, the SandForce Driven logo, SandForce Trusted and the SandForce Trusted logo are trademarks of LSI Corporation. Other company, product or service names mentioned herein may be trademarks or service marks of their respective owners.

---

## Table of Contents

---

|          |                                |           |
|----------|--------------------------------|-----------|
| <b>1</b> | <b>DOCUMENT OVERVIEW .....</b> | <b>4</b>  |
| 1.1      | Purpose of Document.....       | 4         |
| 1.2      | Scope .....                    | 4         |
| 1.3      | Intended Audience.....         | 4         |
| 1.4      | Notation and Terminology.....  | 4         |
| <b>2</b> | <b>UPGRADING FIRMWARE.....</b> | <b>5</b>  |
| <b>3</b> | <b>BRANDING .....</b>          | <b>10</b> |

# 1 Document Overview

## 1.1 Purpose of Document

To describe the various features of the FieldUpdater, how to use them, and how the tool will enable OEM partners to provide a value add service to their end users to upgrade their LSI SandForce controller based drives.

## 1.2 Scope

- FieldUpdater is the field firmware update tool for the SF-2000 product family
  - Supported on Windows 2000/XP/Vista/Win7<sup>\*1,2</sup>, Fedora Core 12 64-bit, and Fedora Core 14 32-bit only.
    - \*Note: 1. In Win 7 must use Microsoft AHCI mode with Microsoft AHCI driver.
    - 2. In Win 7, must log in as an administrator.
  - Supports drives with a LSI SF-2000 controller only.
  - Requires a Field Firmware Package (\*.FFP) or an individual VIC File (\*.VIC) generated by the Genesis Utilities version 1.4.8 and newer.
  - Please note that the FieldUpdater is not backwards compatible with the LSI SF-1000 product family.
- The information in this document is subject to change without notice. This document does not fully describe any industry standard or any particular device or family of devices.

## 1.3 Intended Audience

This guide is written for the following readers:

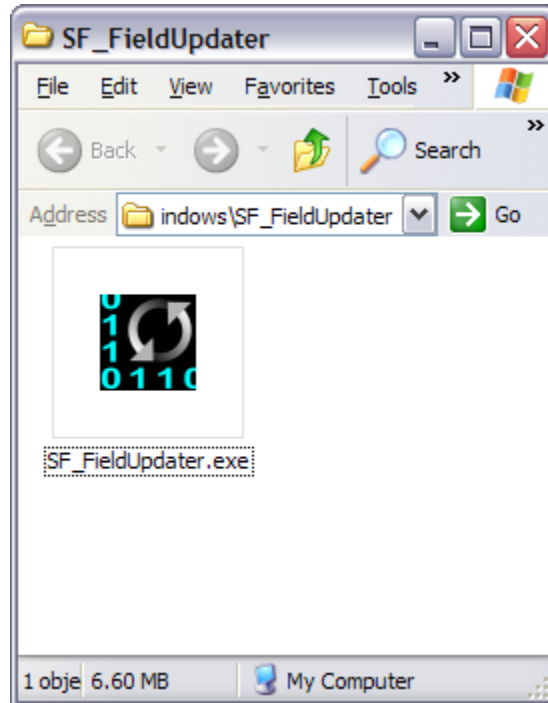
- System Designers
- SSD Manufacturers
- SSD Users

## 1.4 Notation and Terminology

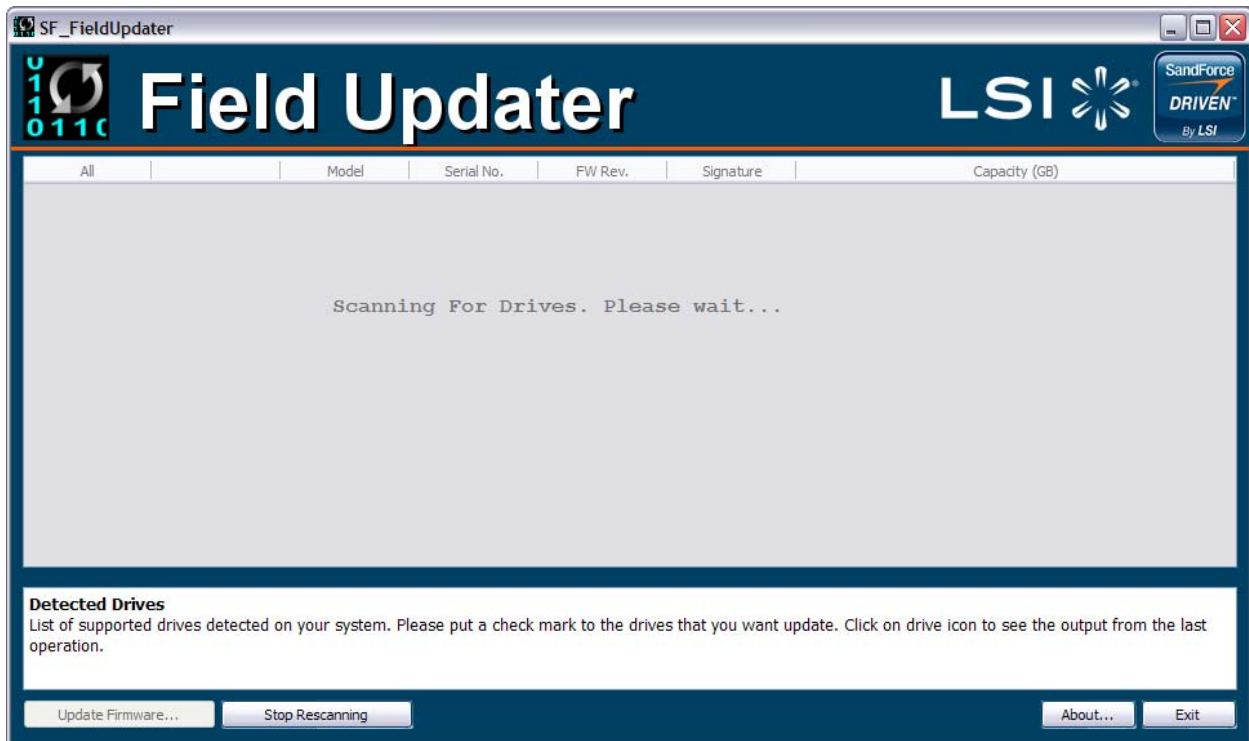
## 2 Upgrading Firmware

In this chapter we will demonstrate how to use the tool to update the firmware on a given device. Let us assume we have three drives in a given system, as seen in Figure 2.1:

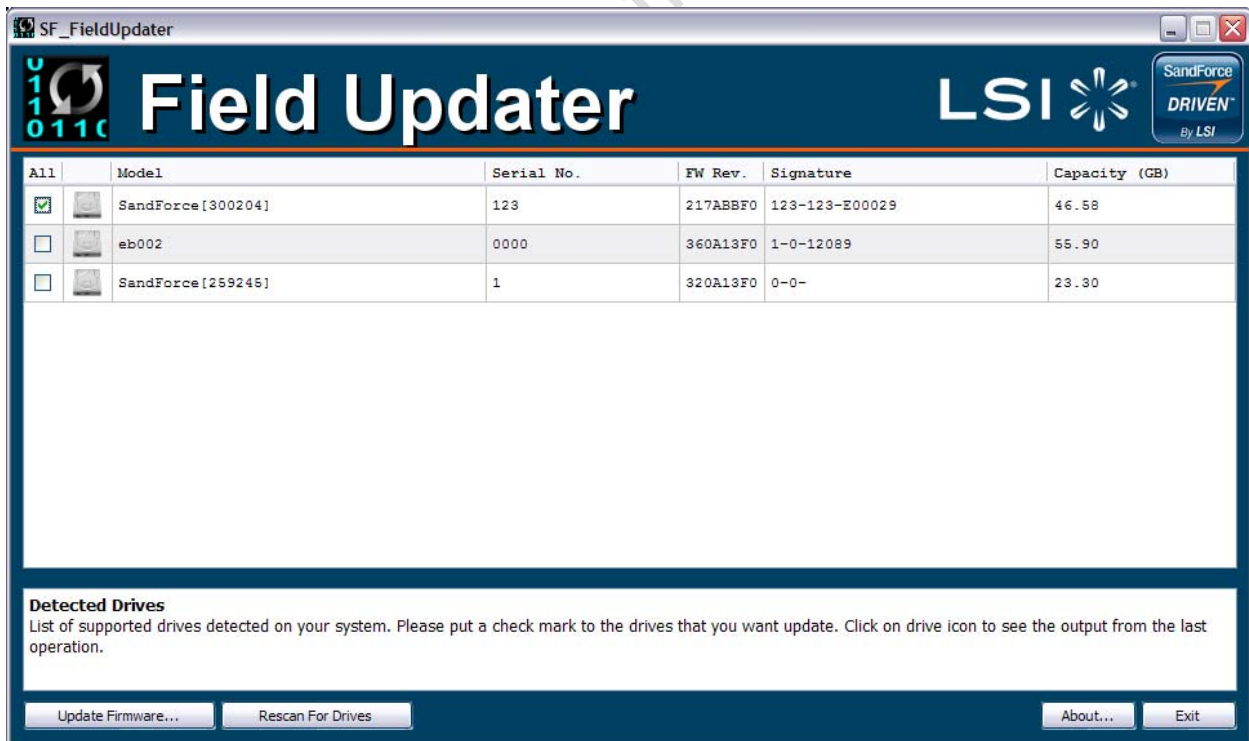
Launch the FieldUpdater application by double clicking it or optionally run it from the console.



Once the application launches, it will automatically scan for all LSI SandForce controller based devices and list them in the main window pane.

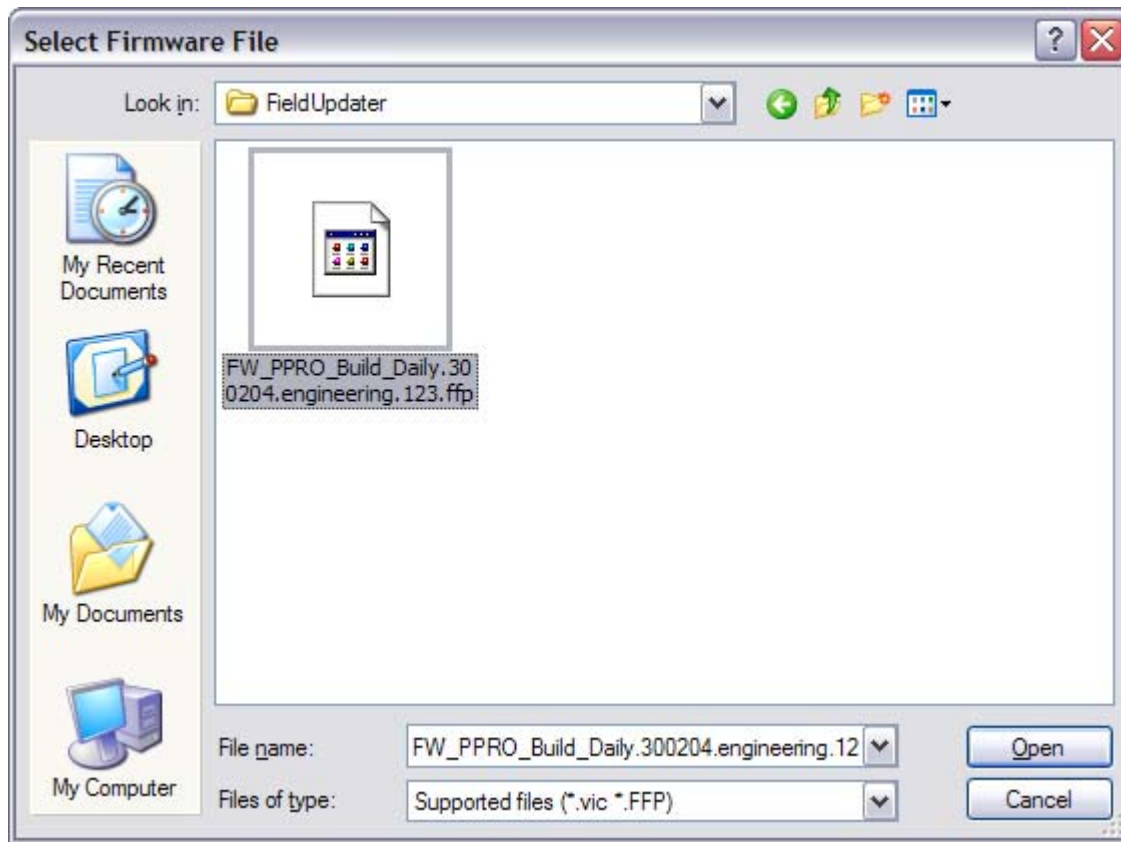


Let us select one or more drives to update.

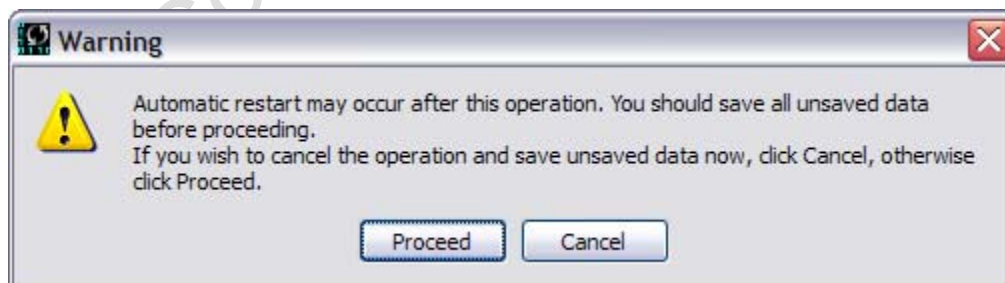


Once you have selected the drive(s) you wish to update, click the “Update Firmware...”

We now need to let FieldUpdater tool to know what Firmware Package (\*.FFP) or individual firmware file (\*.VIC) to use to update the selected drive(s). Select one and click **Open**.

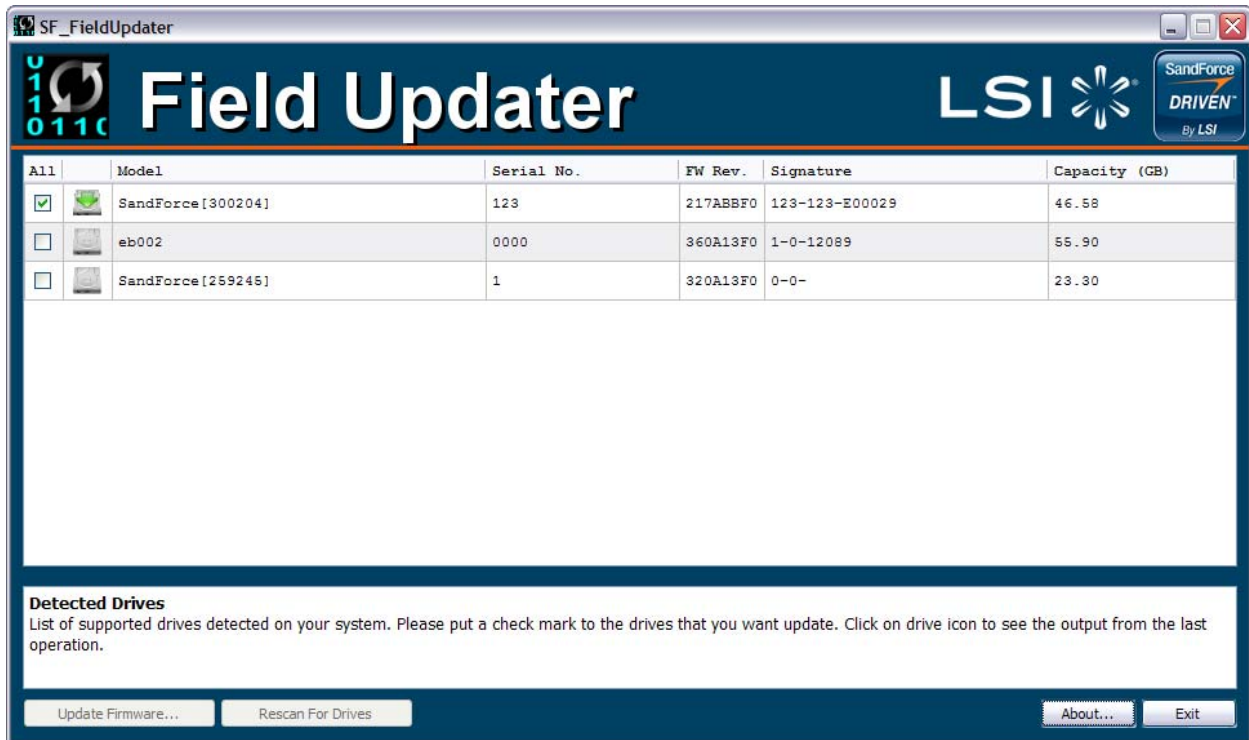


A message box will appear with a warning indicating you must save all important data in other running applications before proceeding to prevent loss of data.

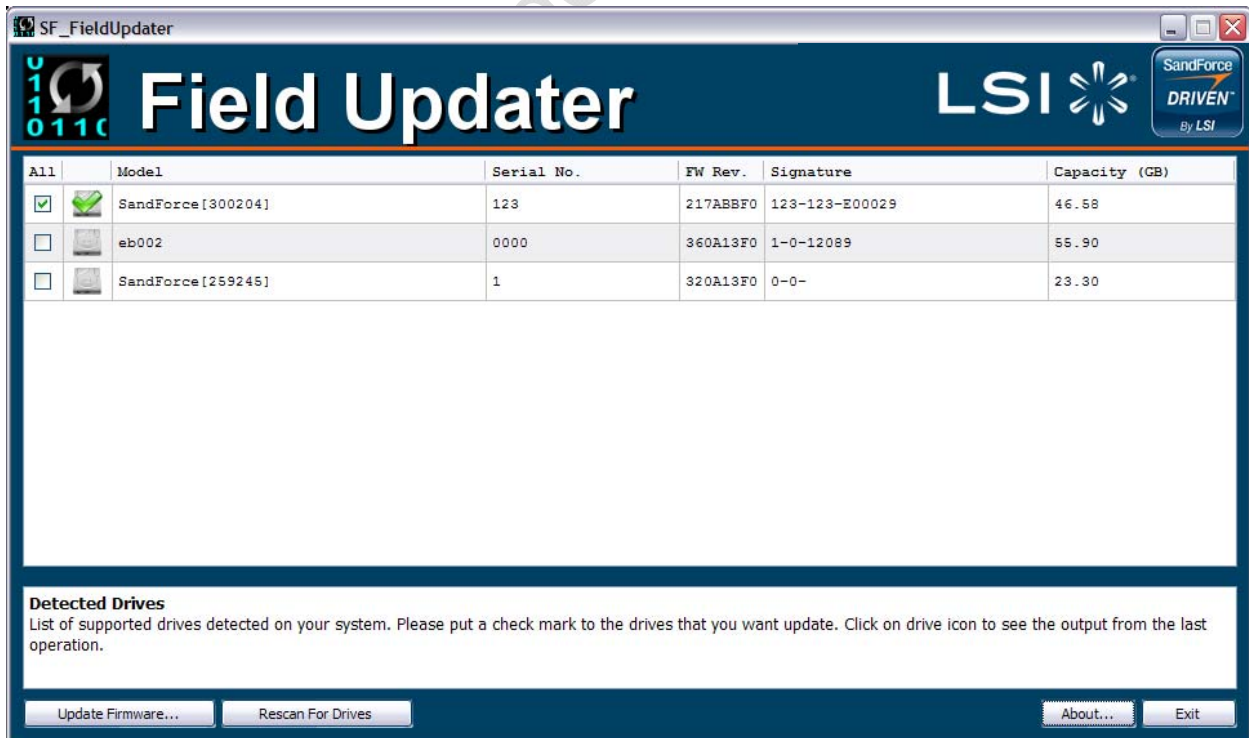


Once you have saved the data, click "Proceed" to continue the update process for the selected drive(s)

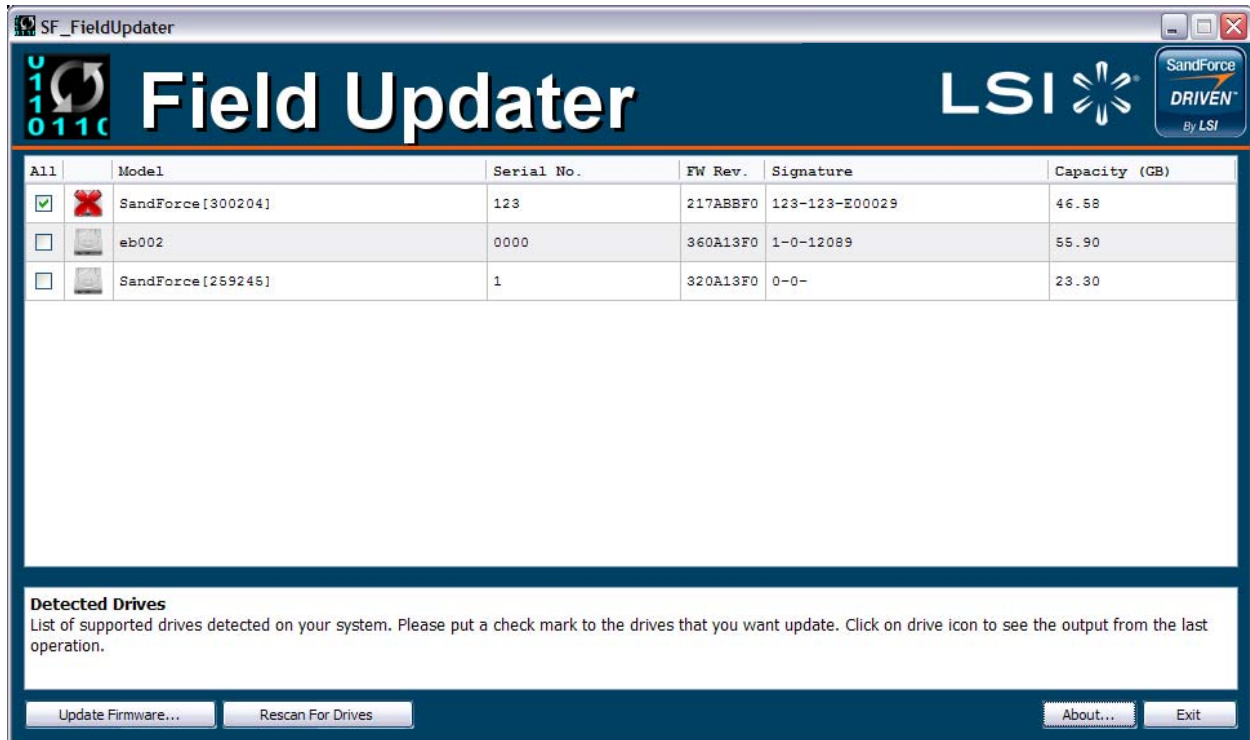
You will see an animation in the disk icon for the drive(s) you have selected to update.



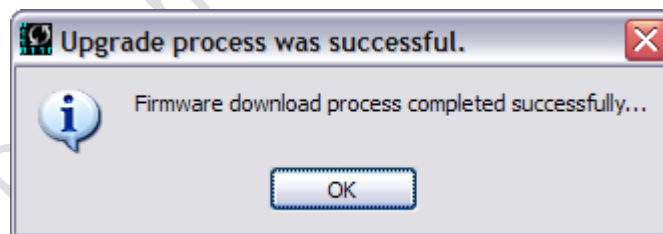
Once the update has completed successfully, the icon shows a check mark indicating all has gone well.



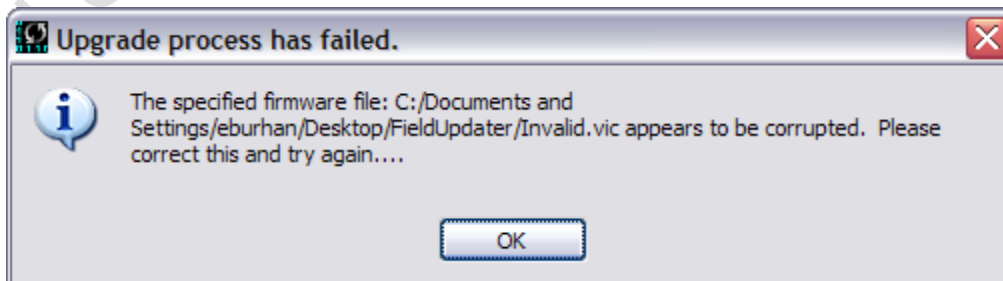
However, if the process failed for some reason, you will see a red “X” next to the failed drive(s)



Whether the update process has failed or completed successfully, you may click the drive icon to get more details. In case of a successful update, once you click the drive icon you get the message:



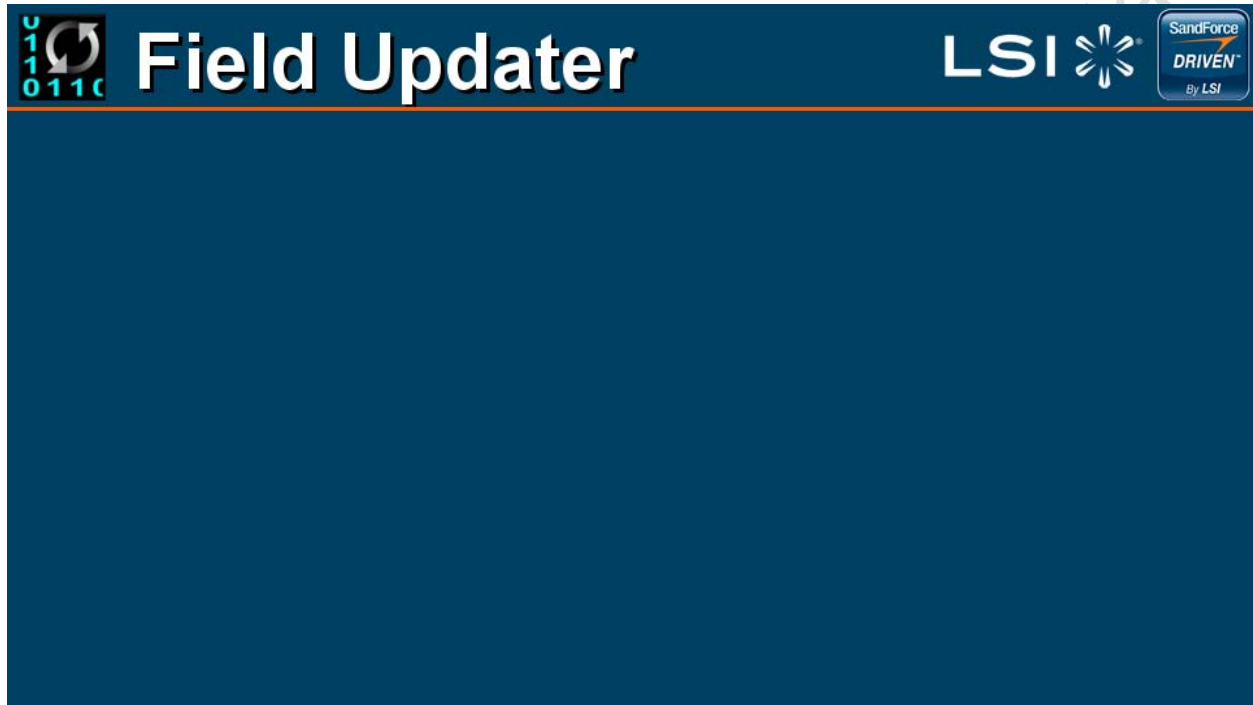
On the other hand, if you have any failure, clicking the icon will open the dialog box providing a description of what has gone wrong.



### 3 Branding

**Please note: This section is not to be disclosed to the public**

FieldUpdater tool comes with a default SandForce background.

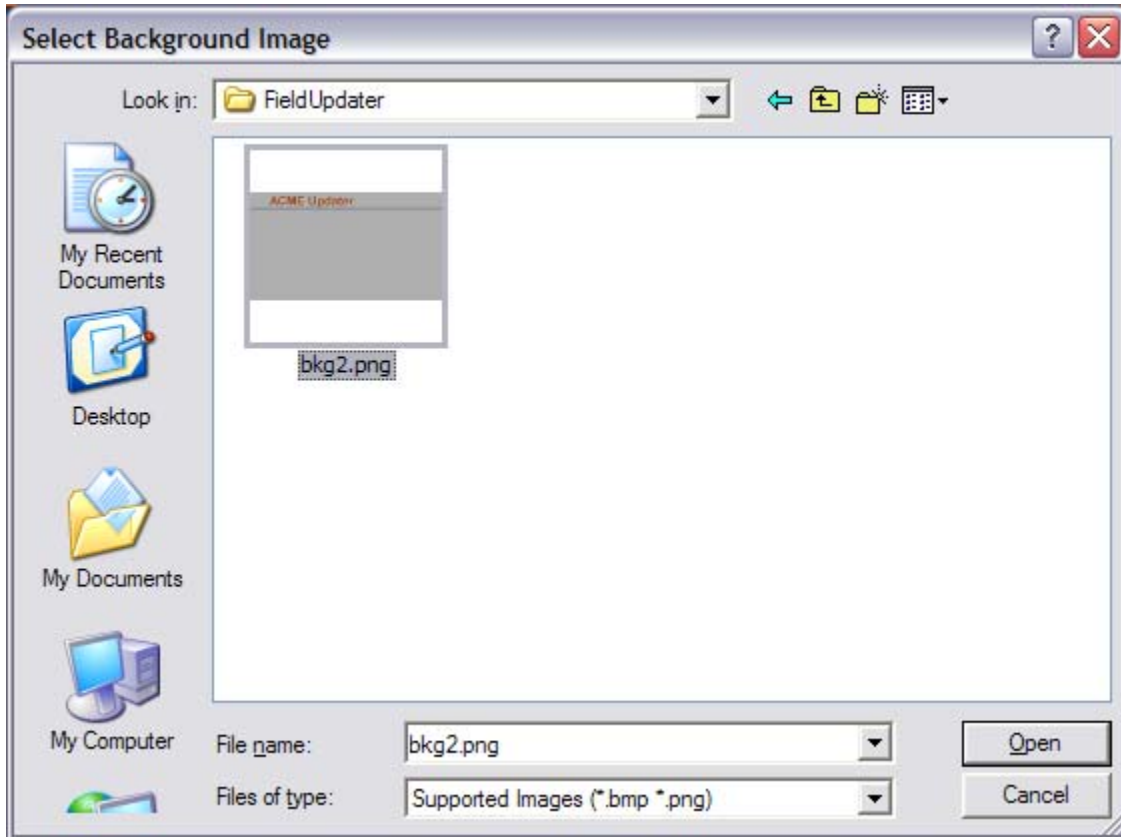


The OEM partner must choose to replace this default backdrop with an image of their own. To do so, the following steps must be followed:

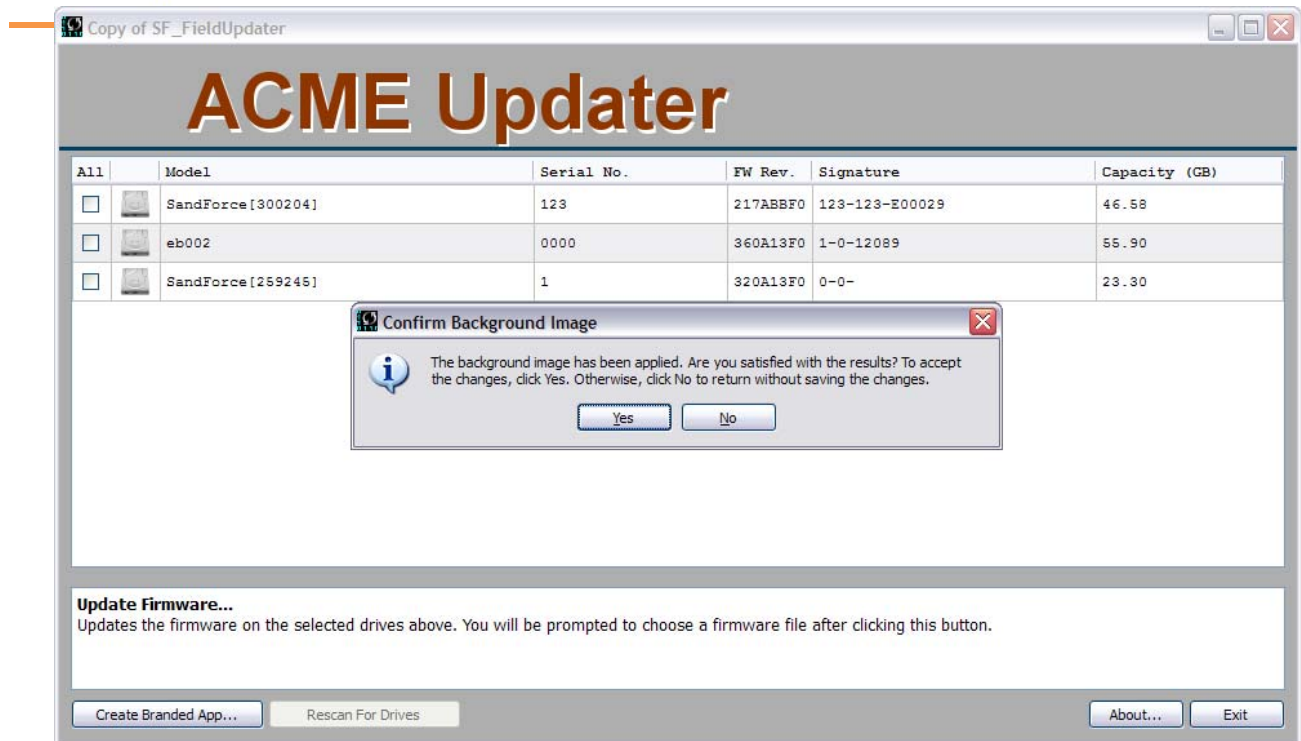
- 1) Open a command line/console window and navigate to the application you wish to perform the branding operation on.
- 2) Type the following command:  

```
./SF_FieldUpdater -brand
```
- 3) You will see a window similar to the following:
- 4) Click the **Create Branded App...** button

- 5) A dialog opens allowing you to choose the background image you wish to use. The image's native dimensions should be 960x540 pixels. It will be stretched to fit if it is a different size. PNG and BMP graphic file types are supported for this operation.
- 6) Select the background image you wish to use and click open



- 7) FieldUpdater will create a new window with the image you have chosen. In this example:



- 8) If you are not happy with the results, or wish to select a different image, click “No” to exit without changes being saved.
- 9) If you are happy with the results, confirm it in the dialog by clicking “Yes”.
- 10) SF\_FieldUpdater will create a new copy of the application which has the background picture you have chosen. You have now successfully branded your copy of the FieldUpdater application.